

Alternator Mount

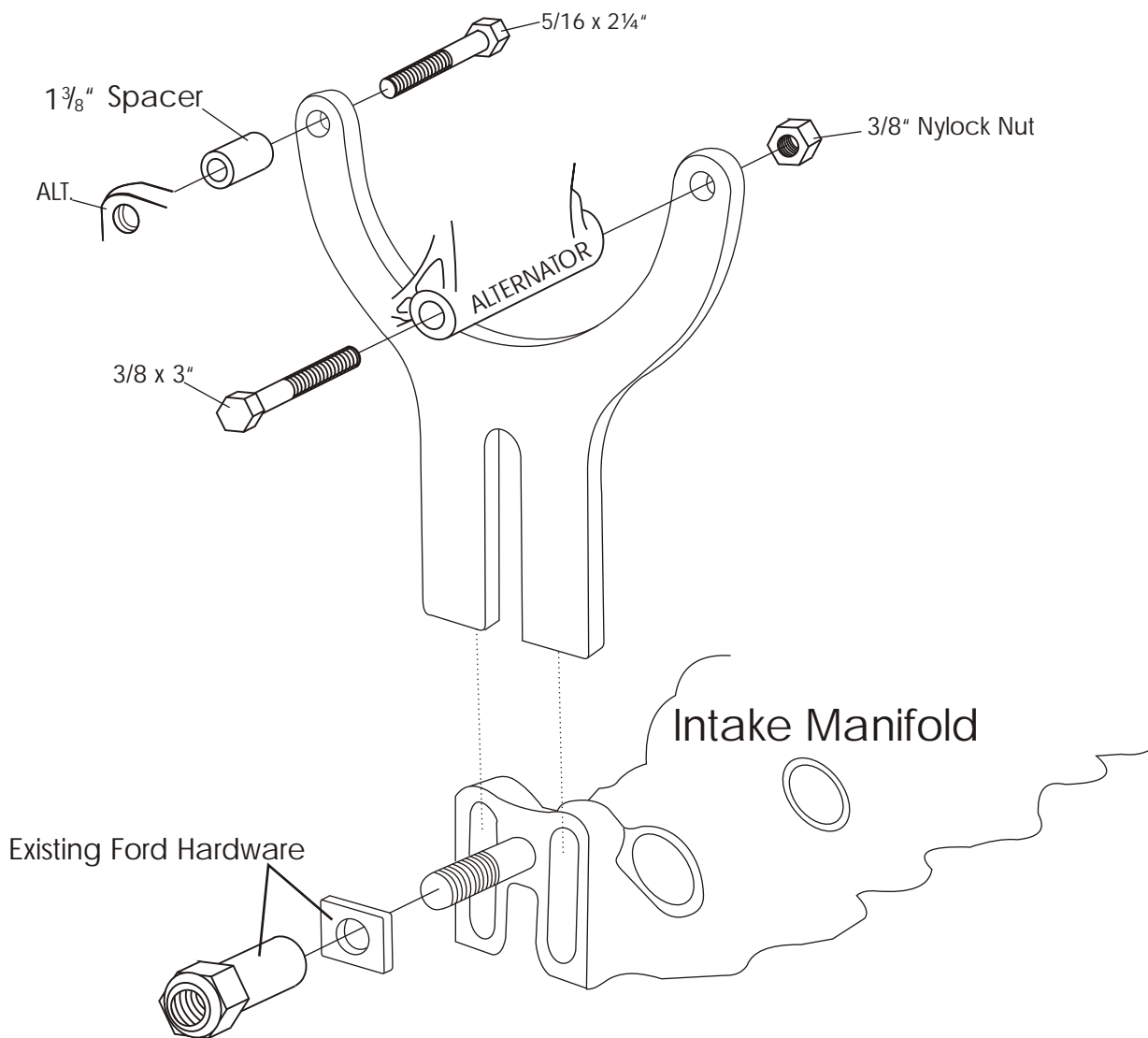
Part# 243

Flathead Ford/Mercury Late Narrow Belt

1950-53 Car



We use a belt length of 53" in our shop for the alternator drive belt. (NAPA part# 13333), and a fan belt length of 42 1/8" (NAPA part# 7417). These lengths may vary depending on your pulley diameters and application.



Alternator
Mount

Part # 243

Flathead Ford/Mercury
Late Narrow Belt

1950-53 Car

ALAN GROVE COMPONENTS, INC.

27070 METCALF ROAD

LOUISBURG, KS 66053